



Foundation Forum

Attica

Covington

Southeast Fountain

SUMMER 2014

NONPROFIT GROUPS SHARE IN GRANTS FROM COMMUNITY FOUNDATIONS

Thirty-four area nonprofit groups shared \$87,315 in grants from the Attica, Covington, and Southeast Fountain Community Foundations, all affiliates of the Western Indiana Community Foundation. Grant monies are made available by donations from caring individuals who want to make a difference by improving the quality of life for others.

The latest recipients are:

Attica Fire Dept. - \$3,500 to purchase a lighting balloon that is designed to provide a tough, durable high-rise lighted balloon to illuminate a large area during a night time emergency fire or rescue run. (*Attica Unrestricted Fund*)



Jackson Township Fire Department

Jackson Township Volunteer Fire Department - \$500 to purchase equipment to be used on the new brush truck. Equipment includes flashlights, bolt cutters, an ax, rescue wrenches, and other accessories purchased. (*Southeast Fountain Special Project Fund*)

Paws-n-Claws - \$1,000 allows the expanded facility to purchase additional kennels to keep the critters safe. (*Attica Unrestricted Fund*)



Covington Physical Education Class

Covington High School - \$1,250 for equipment in testing physical fitness levels of students in Physical Education classes. (*Covington Unrestricted Fund*)

Southeast Fountain Elementary - \$2,890 for visual screening equipment for testing 1st, 3rd, and 5th grade students (including upon parental request). (*Southeast Fountain Unrestricted Fund*)



Southeast Fountain Elementary School receives a grant for visual screening equipment

FROM THE EXECUTIVE DIRECTOR'S DESK



Over the course of the past nine months, the Foundation has been exploring the necessity to remodel and refresh its office space.

The one story brick building with 2,200 square feet, sits on one-acre and was built in 1973 to become the Hillsboro State Bank. Over time, it changed hands, and in 1999 the facility was donated to the Foundation by Old National Bank.

At its Board meeting in January 2014 the Board of Directors voted to remodel the facility and to purchase new furnishings. The eight-week project began in mid-March and was completed by mid-May.

There are two main reasons for the remodeling project. First, it's important to remember that we are a growing organization. What began with an anonymous donation of \$100,000 in 1991 has blossomed to become an organization with over \$13M in assets. It has gone from the days of all volunteer staff to paid professional staff. The Foundation now awards nearly \$400,000 a year in grants and scholarships and manages over 150 endowment funds. We work with over 15 different committees representing nearly 100 Fountain County volunteers, and we host a variety of events which connects us to nearly 1,000 individuals annually.

As a result of our growth, the size of our meeting areas has limited our ability to host certain meetings, seminars, workshops, and other events critical to carrying out our mission of "Helping People to Improve Our Community".

Secondly, the building is 41 years old and most of the wall coverings, window treatments, flooring, and colors have never been changed. Other things have simply "worn out". Therefore, we have replaced the carpeting, enlarged the meeting space, renovated two bathrooms, remodeled the kitchenette, installed energy efficient lighting, and refurbished three staff offices, along with the waiting and reception areas. New desks, chairs, and meeting room tables were also part of the modernizing project.

The Board and staff value excellence in all we do, and we believe our facilities are an extension of offering our best to the citizens of the Fountain County area.

Some of you may be wondering how the Foundation paid for this project. We are pleased to report that private donations were not used for the project. A portion of the earnings from several specific endowment funds were used to offset the cost of the refurbishing. Community grant-making and awarding of scholarships will not be inhibited or impacted by the project.

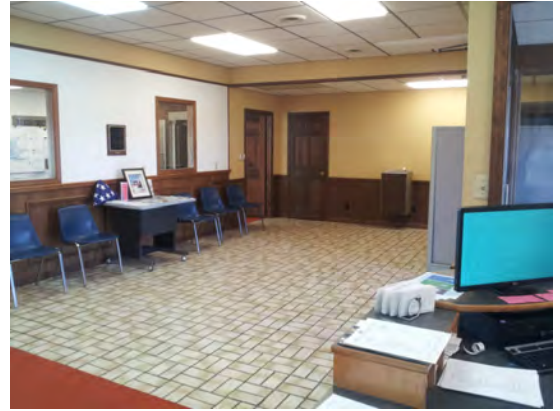
And finally, we were blessed with a great group of contractors, who, by the way were all local.

Thank you for all your support.

Sincerely,



Dale A. White
Executive Director



Old Lobby Area



New Lobby Area



Old Office Meeting Space



New Office Meeting Space

GRANTS FROM COMMUNITY FOUNDATIONS

(CONTINUED FROM PAGE 1)

Southeast Fountain Elementary School – \$750 to offer “Brain Gym” workshops to parents and teachers. The workshop will assist staff and parents in learning additional techniques to increase student focus, behavior, and learning. (*Southeast Fountain Special Project Fund*)

Attica Decorating Committee - \$3,500 to purchase four lighted Christmas displays for McDonald Park. (*Attica Community Improvement Fund and Attica Unrestricted Fund*)

Attica Elementary School - \$2,000 for operating support for the Back Pack Program. (*Attica Unrestricted Fund*)

Attica Elementary School - \$2,000 for operating support for the Help-A-Child Program (*Joan Miller–August Schmid Fund & Attica Unrestricted Fund*)

Attica Public Library - \$625 for MadCap Puppet performance at the summer reading program. (*Attica Public Library Fund*)

Attica Elementary School - \$245 for kindergarten Scholastic Readers. (*Children’s Literacy Fund*)

ASK (Area Sharing Kindness) – \$6,000 for the purchase of equipment and supplies for the newly constructed food pantry. (*Attica Unrestricted Fund*) See article on page 7.

Attica School Corporation - \$2,241 for the purchase of 80 copies of Building Academic Vocabulary. (*Children’s Literacy Fund, Newmark-Fogel Education Fund, Attica Unrestricted Fund*)

Family Night - \$1,530 for costs (meals, etc.) associated with the fall performance of “A Tribute to Dr. Suess”. (*Covington Unrestricted Fund*)

Covington Tree Fund - \$200 for tree planting. (*Covington Tree Fund*)

City of Covington - \$2,500 for a new 8-foot tall “Turbo Twister Thrill Ride Pool Slide at the City Pool. (*Covington Park Fund*)

Southeast Fountain Elementary School - \$7,500 for 6th grade field trip to Chicago, Illinois, to the Museum of Science and Industry. (*Grainger Foundation pass-thru grant*)

United Way of Vermilion County, IL - \$1,000 for matching grant to provide services to citizens of Fountain County. (*Bank of Western Indiana Fund*)

City of Covington - \$14,000 for lawn mowing equipment to be used at the City Park and Covington Circle Trail. (*Covington Park Fund, City of Covington Fund, Covington Unrestricted Fund*)

Attica Elementary School – \$250 provided for the Back Pack Program for weekend meals. (*Archer Daniels Midland pass-thru grant*)

Wabash Valley Alliance - \$669 for registration fees to attend conference on domestic violence. (*Attica Unrestricted Fund, Southeast Fountain Special Project Fund, Covington Unrestricted Fund*)

Covington Elementary School - \$3,500 for “Hoosier Summer School”, in its 22nd year, for 45 students (4th & 5th grade) to visit historic sites and places of interest in Indiana in June, including 3-day trips and 1-overnight camping trip. (*Verna Glascock Shelton Fund*)

Paws-n-Claws - \$1,620 for conference registration fees for animal control officers to become certified. (*Attica Unrestricted Fund & Southeast Fountain Special Project Fund*)

Mount Hope Cemetery - \$11,400 for new lawn mower to be used at the cemetery. (*Covington Unrestricted Fund*) See article on page 6.



Mt. Hope Cemetery Association Board accepts a grant for the purchase of a new lawn mower

Newtown Community Church - \$500 for community-wide back-to-school project of basic school supplies, backpacks, and sports bags for Southeast Fountain Elementary School children. (*Southeast Fountain Special Project Fund*)

Fountain Central High School – \$300 for costs associated with the after-prom. (*Southeast Fountain Special Project Fund*)

American Red Cross - \$1,000 for services provided to the Town of Mellott following the November tornado. (*Southeast Fountain Special Project fund*)

Southeast Fountain School Corporation - \$2,000 for costs associated with the Fountain Central High School honor banquet. (*Charles & Rosemarie Haas Donor Advised Fund*) See article on page 8.

Veedersburg American Legion Post 288 - \$1,793 annual payout from endowment fund (*Veedersburg American Legion Post 288 Fund*)

GRANTS FROM COMMUNITY FOUNDATIONS

(CONTINUED FROM PAGE 3)

Christ Centered Attica Teens - \$3,900 for summer mission trip to Benton Harbor, Michigan to assist in rehabbing homes for the elderly in the impoverished inner-city. (*Christian Ministry Fund*)

Community Action Program - \$1,050 for educational presentations for expectant parents and parents of children up to age two including: car seat safety, infant CPR, lead poison prevention, nutritional/prenatal development, and more. (*Peggy Poston Unrestricted Fund, Verna Glascock Shelton Fund, Southeast Fountain Special Project Fund*)

Town of Veedersburg - \$5,000 towards repairs (\$80,000+) at the Veedersburg pool in partnership with the Veedersburg Revitalization Association, Veedersburg Redevelopment Commission, and the Town of Veedersburg. (*Charles & Rosemarie Haas Donor Advised Fund*)

Southeast Fountain School Corporation - \$500 for Rachel's Challenge, an anti-bullying assembly at the elementary and high school, including teen leadership training and a community program. (*Southeast Fountain Unrestricted Fund*)

Jerry G. Boles Scholarship



Jerry G. Boles was a shy man known for his love of God and the desire to care for His creation. Though born in Pickett County, Tennessee, he was raised in Attica and spent his childhood at the park or near the river, developing his love for all kinds of animals and nature in general. His favorite animal was a mini poodle named Buttons. Mr. Boles graduated from Attica High School in 1966, and his memory will live on in the form of a new scholarship for Attica graduates.

For many years, Mr. Boles worked at Buckley's Store in Attica. He later worked for 28 years at Eli Lilly in Lafayette, retiring in 2005 as a Senior Operator. In addition, Mr. Boles was an active member of the Attica First United Methodist Church, where he served on the Board of Trustees and the Reed Music Trust. His death in 2008 followed a two year battle with cancer. After talking it over with her two daughters, Marcia Boles decided that the best way to honor her late husband's memory would be to provide help to someone who would care for and protect animals.

Applicants to the Jerry G. Boles Scholarship should be in pursuit of a career that focuses on the care and protection of animals. Degrees and careers may include: animal grooming, veterinary technician, animal science studies, animal science, livestock management, farm animal breeding, dairy science, animal nutrition, animal health sciences, wildlife ecology, animal biology, wildlife, and fish and conservation biology. The options are not limited to those previously listed; any career path related to caring for God's creation is applicable.

While thinking through the requirements for this scholarship Mrs. Boles recognized the possibility that there may not always be graduates pursuing the aforementioned career paths. In this case, the selection committee will consider applicants that meet all other selection criteria. This scholarship is also not only for the traditional college student. Nontraditional students such as a stay-at-home mom looking for a second career or those returning from the military are also encouraged to apply. In this way, the scholarship will always have a lasting impact in the surrounding community. Above all, the important thing is to help people of Attica in their education.

Jerry G. Boles Scholarship applicants must be a graduate of Attica High School and must have lived in the Attica High School District for at least 12 months prior to the application date. In order to be eligible, the graduate must be accepted as a full-time student at any two-year or four-year accredited public or private college or university. A GPA of 2.0 or higher is also required. Other selection criteria include: financial need, character, citizenship, leadership, and service. The submission of letters of recommendation is strongly encouraged when applying for Mr. Boles' scholarship.

Jerry Boles always felt that young people were the hope of the future. With this new scholarship, his legacy of caring for animals is helping to provide for the future of young graduates. When asked what Mr. Boles would think about having a scholarship in his name, Mrs. Boles replied simply, "Humble."

A donation to the Jerry G. Boles Scholarship would help provide support to those who share its namesake's passion for God's creation. All donations are tax deductible and can be made online or mailed to: Attica Community Foundation, P.O. Box 161, Attica, IN 47918.

New Funds

The endowment funds listed below have recently been established by local organizations and caring citizens. Any individual, business, or organization can establish a fund and/or contribute to an existing fund at any time. All donations are tax-deductible to the full extent allowed by law.

Recently, the Attica Consolidated School Corporation transferred the following five scholarship funds to the Community Foundation. The Foundation will be managing the assets associated with each of these funds and the School Corporation will continue to select the recipient(s).



Raymond & Mildred DeSutter Scholarship

Applicants must be graduates of Attica High School. Priority is given to students with strong leadership skills, excellent scholarship effort, athletic talent, and exemplary citizenship characteristics. Applicants must be enrolled as a full-time student and attending any two- or four-year accredited college or university.



George Curtis Green Scholarship

Applicants must be graduates of Attica High School. The scholarship is for students pursuing a career in the field of education. Applicants must be enrolled as a full-time student and attending any two- or four-year accredited college or university.



Marguerite Smith Norman Scholarship

Applicants must be graduates of Attica High School. The scholarship is for students pursuing a career in the field of education. Priority is given to students with strong leadership skills, a positive mental attitude, exemplary citizenship characteristics, and excellent scholarship effort. Applicants must be enrolled as a full-time student and attending any two- or four-year accredited college or university.



Naomi Strader Scholarship

Applicants must be graduates of Attica High School. Priority for the scholarship is given to students pursuing a career in the field of education. However, in the event there are no education majors, the award may be available to other applicants. Applicants must rank in the top third of their graduating class based on GPA. Applicants must be enrolled as a full-time student and attending any two- or four-year accredited college or university.



Robert E. & Barbara Nehemiah Brown Scholarship

Applicants must be graduates of Attica High School. Applicants must be enrolled as a full-time student and attending any two- or four-year accredited college or university.

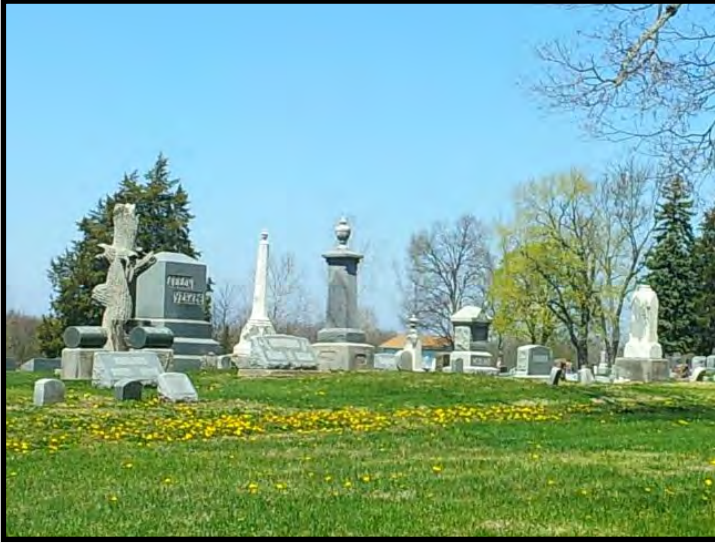
Donations to these scholarship funds can be made online or mailed to: Attica Community Foundation, P.O. Box 161, Attica, IN 47918.

For more details about establishing an endowment fund to support a local organization, provide assistance for a community project, or to establish a fund to benefit area students, contact the Foundation at (765) 793-0702, ext. 4. To view all 150+ charitable funds visit our website at www.wicf-inc.org.

MAXIMIZE YOUR TAX BENEFITS

- Memorial and Honor gifts of cash are generally deductible in amounts up to 50% of your adjusted gross income (AGI). Gifts of appreciated assets are general deductible in amounts of up to 30% of AGI.
- Consider making larger gifts in years when you have more income. The higher your tax bracket, the greater the savings from your gifts.
- Remember to keep your receipts and acknowledgement letters for tax purposes.

Mount Hope Cemetery



Mount Hope Cemetery served as a resting place for Covington history even before its organization in 1938. Though recently encountering some financial burden, it remains in good hands, run by a Board of Directors dedicated to go the extra mile to make ends meet. This year, a grant was awarded to Mount Hope Cemetery to assist in maintaining a beautiful place of burial for Covington's former natives, residents, and local businessmen including Tom McGurk Sr., a founding member of the Covington Community Foundation.

In 1869, six acres of land were set aside as a burial ground for deceased members of the Masonic group, the Odd Fellows, and their families. Lots were also available on the land for sale to the general public. During the Golden Age of Fraternalism in America, from 1860 to 1920, the Odd Fellows became the largest fraternal organization; even larger, at the time, than Freemasonry. By 1889, the Independent Order of the Odd Fellows had lodges in every American state, including the one in

Covington, Indiana. For almost 70 years, Mount Hope Cemetery remained in the control of the Odd Fellows' Lodge, which has been recorded to have provided monetary relief to the widows and orphans of its deceased members.

Olive Coffeen, a well-educated and influential resident of Covington, was laid to rest in Mount Hope Cemetery in 1943. The Coffeenians of Covington, a social welfare organization formed in 1937, are named for this woman who once held the record for longest span of teaching with a total of 80 years in the Guinness Book of World Records. A portrait of Ms. Coffeen was commissioned by the class of 1941 and painted by former student Eugene Savage, whose famous work also graces the walls just inside the entrance of the Covington Courthouse. This portrait of Ms. Coffeen, along with a pair of her glasses, can be found hanging in the Covington Library.

Respected United States Representative and Covington native Cecil Harden was laid to rest in Mount Hope Cemetery in 1984. Having been elected in 1948, Ms. Harden served five terms in the U.S. House of Representatives, making her one of the longest-serving women by the time she retired. While in Congress in 1951, Ms. Harden became the first woman member of a House subcommittee to make an official trip around the world. Cecil M. Harden Lake in Rockville, which includes Raccoon State Recreation Area and Historic Mansfield Roller Mill, is named for her. Until the 113th United States Congress in January 2013, she remained the only Republican woman to have represented the state of Indiana in U.S. Congress.



With 5,344 interments, there is a large amount of Covington history and countless personal memories – of family, friends, former teachers, and past representatives – contained in Mount Hope Cemetery. Daily maintenance and two separate lawn mowers are required to care for more than 30 acres of land. This year, the Covington Community Foundation awarded an \$11,400 grant for replacement of a 22 year old mower, contributing to the maintenance and historic preservation of Mount Hope Cemetery.

Determined to make ends meet following the recession, Board members went in search of donations and were persistent in their goal to establish a fundraising endowment dedicated specifically to Mount Hope Cemetery. Contributions made to the *Mount Hope Cemetery Association Endowment Fund* provide support for the long-term care of Mount Hope Cemetery from the earnings of the endowment fund.

You could also help provide funding for the day-to-day operations of Mount Hope Cemetery by donating to the *Mount Hope Cemetery Association Pass-Through Fund*. All donations are tax deductible and can be made online or mailed to: P.O. Box 175, Covington, IN 47932.

Area Sharing Kindness (ASK)



Since its formation in 1981, Area Sharing Kindness (ASK) has had an experience relatable to that of Goldilocks in trying to find a home that is not too big, or too small, but just right. The organization survived a bear of a time with relocation; starting in an Attica Elementary School classroom and moving to borrowed spaces such as the Armory, NAPA store, and REMC building. At last, in a true fairy tale ending, a permanent building has been built specifically to their needs.

ASK began in response to a need for help for Harrison Steel workers to get through the Christmas holiday. That season, with assistance from co-founders Ann Harrison, Harold Long, and JoAnn Miller, toys and coats were provided to families in need. Today, ASK has managed to stay true to its roots with Coats for Kids and Toys for Tots. The organization sponsors Coats for Kids every fall,

collecting and distributing warm winter jackets to help children last through the cold winter months. The Toys for Tots program supplies qualified parents with toys in an effort to ensure no child is without the memory of waking up to a present on Christmas morning.

Throughout more than 30 years of service, as ASK evolved and responded to the needs of the community, it became better known as a food pantry. After signing up for the program, any family in need of assistance can stop by ASK on a bi-weekly basis to receive necessary food items. ASK is open to distribute food every Tuesday from 9 a.m. to 12 p.m. and serves both Fountain and Warren Counties. As of 2013, 57% of the families served are from Attica, 11% are from Fountain County outside of Attica, 32% are from Warren County, and 1% are from other places outside of Fountain and Warren Counties.

The Turkey Trot, started in 2009, is one of the main sources of funding for ASK, in addition to businesses, churches, organizations, Food Finders, and individual donations. Sam Crane, then a junior at Attica High School, organized the 5K walk/run as a way to raise funds and boost top of mind awareness for the food pantry where he volunteered. When Mr. Crane left for college, the race kept growing and began to develop into a family-wide ordeal. “We always enjoy seeing the whole community come together,” Mr. Crane regarded. On the day of the race, food donations are accepted in exchange for raffle tickets for prizes, and the Cranes are always looking for volunteers. The Turkey Trot has become a Thanksgiving morning tradition.

This spring, ASK finally moved into a building that was “just right.” A fairy godmother of sorts constructed the new facility – located in front of the Attica Inn near Pizza Hut – which contains a lengthy list of positive features. The Board of Directors is excited about having a walk-in freezer and commercial refrigerator. Air conditioning and nice restrooms provide more comfortable conditions for volunteers and the families served. An overhead garage door at the back of the building makes unloading items faster and easier. The design of the new building allows for more streamlined service; families can come in through the front door, receive their food, and leave through a side exit. This custom-made building makes serving Fountain and Warren Counties more efficient and effective.

The Attica Community Foundation issued a \$6,000 grant to ASK, providing funds for miscellaneous items needed to operate the new facility. These items included tables and chairs for the meeting room and shelving for the spacious storage area. The shelving contributes to the organization of the new storage space which houses toys and coats collected throughout the year. Ideas for educational classes – such as cooking lessons or tips on how to make dollars stretch – are being brainstormed as a possible way to best utilize the new meeting room. ASK’s relocation to this building allows for new possibilities in serving the community that may have proven difficult in the previous borrowed spaces.

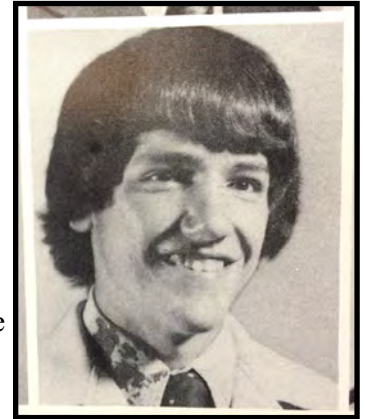
ASK will live happily ever after in its new permanent building, but the families of Fountain and Warren counties still need your help to put meals on the table and presents under the tree. Please consider how you can make a difference in the lives of Attica area citizens. All donations are tax deductible and can be made online or mailed to: Attica Community Foundation, P.O. Box 161, Attica, IN 47918.

Fountain Central Academic Awards Banquet



Alumnus Mark McGrady and Fountain Central High School (FCHS) junior Mason Fritzen share more than an institution of education. Both have participated in the tradition of being recognized for their scholastic achievement by receiving an Honors Jacket at the Academic Awards Banquet. What started as an evening to acknowledge students' accomplishments has, over the years, grown into a distinguished event that encourages students to dedicate themselves to their studies throughout the entire duration of their high school careers.

Mr. McGrady was one of the first FCHS students to receive an honors jacket in 1977, his senior year. The Fountain Trust Company, which prides itself on being a community bank, had been sponsoring jackets in Covington and extended the idea of an Academic Awards Banquet to FCHS. A large number of chevrons were awarded at that first banquet, held in the cafetorium, as seniors were recognized for all four years of high school. Mr. McGrady's jacket now hangs in a closet next to three other FCHS honors jackets belonging to his children.



Mark McGrady - 1977

Academics are a priority at FCHS and the banquet is designed to be a special evening for honored students and their families. Sponsors cover the cost of the meal for those receiving awards. Current Principal, Pat Culp, indicates the event began to exceed the capacity of the Beef House Restaurant, prompting a need to limit the amount of tickets families could purchase to attend. This speaks to the success of the Academic Awards Banquet and serves as an indicator that students and their families find the evening meaningful.

All FCHS students, grades 9-12, are eligible for acknowledgment at the Academic Awards Banquet. Honors jackets are awarded to students earning all A's for one semester with chevrons awarded for each subsequent semester. Freshman high honors is a new recognition for freshmen earning a combination of all A's and A-'s for a semester. Students earning all A's and B's are awarded a medallion. Academic honors blankets are a new award for seniors earning a cumulative GPA of 3.83 or above during their high school career. Unlike the honors jacket, not typically worn after high school, blankets can be used for many years following graduation.

Honors jackets serve a valuable purpose to school camaraderie. At FCHS, all of the jackets – academic, athletic, or otherwise – are the same style and color. After the jackets are placed on the honored students they are worn with pride and unify the school. FCHS Guidance Secretary, Amie Bowling, recalls that students are always beaming when they come in for sizing. She shares that her daughter, Lauren Bowling, who already had a jacket from a previous school, was excited to receive a new one of blue and gold from FCHS.

Mason Fritzen was one of 162 students recognized at the Academic Awards Banquet on April 16th, 2014. He is distinctly remembered by Mr. Culp for wearing his honors jacket every day – even in the warm May weather – because he was so proud to have received it. This year, Mr. Fritzen was awarded two chevrons for his additional semesters of all A's. Many of the students who frequent the halls of FCHS share similar stories of continuing academic success.



Mason Fritzen - 2014

The Southeast Fountain Community Foundation (SFCF) has awarded a \$2000 grant to the banquet for the past two years. "Every one of them [the students] appreciates the opportunity to have something tangible," said FCHS Guidance Counselor, Lisa Jones, when asked about the impact of the contribution. The grant, applied to the cost of awards such as jackets and blankets, plays a role in providing students with a physical representation of their accomplishments. The staff and administration of FCHS are thankful for the financial support of the Foundation.

Two options are available if you would like to support Fountain Central High School and students like Mason Fritzen. *The Southeast Fountain School Corporation Education Endowment Fund* provides support of education and programs not met through regular educational budgets. *The Southeast Fountain Scholarship Fund* provides scholarships for graduates of FCHS who exhibit a financial need and have at least a 2.75 GPA.

All donations are tax deductible and can be made online or mailed to: Southeast Fountain Community Foundation, P.O. Box 95, Veedersburg, IN 47918.

MEMORIALS AND TRIBUTES

Memorial gifts provide a way for families and friends to remember their loved ones. Tribute gifts are a way to celebrate a life, an anniversary, a birthday, or simply says "thank you" for special things they have done for the donors or others. We will acknowledge your gift to the appropriate family on the day it is received. The amount will not be mentioned. You will also receive an acknowledgement of your gift. The name of the person being memorialized or honored is in **bold red**. We received the following Memorial and Honor gifts from October 1, 2013 to April 30, 2014.

MEMORIALS

Nathan Allen

Mrs. Charline Allen

Rosalie Allen

*Mr. & Mrs. Wayne Crowder
Mrs. Georgeanna Ford*

Sam Allen

Mrs. Georgeanna Ford

Jean Alyea

Mrs. Georgeanna Ford

Blanche Anderson

Mr. & Mrs. Ralph Tillotson, II

Pat Applegate

Hotel Attica

Dick Ashton

*Mr. & Mrs. Rick Ashton
Mrs. Judy Ferrell
Mr. & Mrs. Tom McGurk, Jr.*

Barbara Bardos

*Mr. Michael Bardos &
Ms. Anna Binder*

Gerald Bennett

Mrs. Joanne Bennett

John Bennett

Mrs. Joanne Bennett

Thomas & Helen Bennett

Mrs. Virginia Bennett

Martin Bodine

Mrs. Irene Bodine

Jerry Boles

*Mrs. Marcia Boles
Mr. & Mrs. Kenneth Olsen*

Lance Bowles

Mr. & Mrs. Ben Bowles

Scott Brown

Ms. Theresa Grisham

Pat Bush

Mrs. Irene Norman

Barbara Campbell

Mrs. Georgeanna Ford

James & Helena Carter

Mr. Jay Carter

Jeffrey Chapman

Mr. & Mrs. Thomas Chapman

Jeff Clark

*Mr. & Mrs. Dean Curtis
Mrs. Georgeanna Ford
Mr. & Mrs. Vince Grogg*

Verl Cline

Mr. & Mrs. John Cotten, Jr.

Lee & Thelma Clingan

Mr. & Mrs. David Clingan

Jessica Coats

*Mr. & Mrs. Leonard Allen
Mr. & Mrs. Curt Daugherty
Mr. & Mrs. Doug Davenport*

Norma Collins

Ms. Elaine Fink

Al Cook

Mr. & Mrs. Jeff Mason

Ruth Cook

Mr. & Mrs. Jeff Mason

George & Ethel Cooper

Mr. Harold Long

Lee Corey

Mrs. Betty Corey

Phyllis J. Cotten

Mr. & Mrs. Ron Cotten

Earl & Georgiana Cunningham

Ms. Carolyn Cunningham

Marc Cunningham

Mrs. Irene Norman

John Donovan

Mrs. Nancy Donovan

Russell & Pearl Elliot

Mr. & Mrs. William Elliot

Delores Ellmore

*Mr. & Mrs. Hank Bilsland
Mr. & Mrs. John Cotten, Jr.
Mrs. Georgeanna Ford*

Blaine & Amy Emory

Mr. & Mrs. John Lambert

Richard Estes

*Mr. & Mrs. Duane Roderick
Mr. & Mrs. Robert Shepherd*

Barry Evans

*Mr. & Mrs. Ben Bowles
Mrs. Jennie Douglas
Ms. Rita Evans
Mr. & Mrs. Allen Gerard
Ms. Sharon Jones*

Bill Fishero

Mrs. Sarah Lou Fishero

Brad Fishero

*Mr. & Mrs. Jeff Fishero
Mrs. Sara Lou Fishero
Mr. & Mrs. Tom Fishero
Mr. & Mrs. Jeff Gossett
Mrs. Linda Zeller*

Nancy Fisher

Ms. Judith Miller

Susan Fischer

*Mrs. Nancy Clark
Mr. & Mrs. Ralph Tillotson, II*

Carl Fite

Mr. & Mrs. Mack Fultz

Ralph & Maxine Flora

Mrs. Martha Gross

MEMORIALS/TRIBUTES (CONTINUED)

Martha "Burt" Florey
Mrs. Sarah Lou Fishero

Don Ford
Mrs. Georgeanna Ford

Del Gerling
Mrs. Dee Gerling

Tom Grogg
Mr. & Mrs. Dale White

**Henry James & Dorothy Crowder
Gross**
Mr. James Gross

Evelyn Grubb
Wabash Senior Citizens

Robert & Sylvia Grubbs
Mr. & Mrs. Allen Lueking
Mr. & Mrs. John Grubbs

Patrick "Pat" Haff
Mr. & Mrs. Thomas Brennan
Mr. & Mrs. Stephen Chapman
Mr. & Mrs. Gregory Colbert
Mr. Dave Dunlap &
Ms. Kathleen Rubino
Mrs. Georgeanna Ford
Mr. William Foster
Mr. Mike Galloway
Mr. & Mrs. Vince Grogg
Ms. Debby Gurley
Ms. Lori Hall
Ms. Sandy Hawkins
Ms. Pamela Hughes
Mr. & Mrs. Michael Johansen
Mr. & Mrs. Joseph Kuchenbuch
Mr. & Mrs. Erwin Larson
Mr. & Mrs. Richard Lehe
Mr. & Mrs. Andrew Lenczycki
Mr. & Mrs. Murray Malinoski
Mr. & Mrs. Gerald Mohny
Mr. & Mrs. John Nichols
Mr. Rick Parrish
Ms. Courtney Poor
Ms. Emily Redenbarger
Ms. LuAnn Rodriguez
Mr. & Mrs. Lawrence Rybicki
Mr. & Mrs. Thomas Shultz
Mr. & Mrs. David Stiemsma
Mr. & Mrs. Max Tavernier
Mr. Benny Teel
Mr. Robert Teel
Mr. & Mrs. Timothy Voegle
Mr. & Mrs. Daniel Warkentien
Mrs. Mary Kay Young

All About Travel
Austin Lake Catamaran Assoc.
Frontier High School Class of 1970
Pat's Pontoon Services

Earl Haga
Mrs. Betty Cates

Claude & Kate Hale
*Mr. Larry Woodrow & Ms. Toni Jo
Lindstrom*

Rodny Harden
Mr. & Mrs. Al Harden

Ted & Roxie Hardy
Mr. & Mrs. Robert Hardy

Layton Hathaway
Mr. & Mrs. Doug Davenport
Mr. & Mrs. Joe Hathaway
Mr. & Mrs. Randy Hathaway
Ms. Susan Smith
Mrs. Maxine Swaim

Harold D. Hegg
Mrs. Barb Hegg
Mr. & Mrs. Harold M. Hegg

Lawrence "Bud" Hoagland
Mrs. Kathryn Hoagland

Ray W. Hooker
*Mr. & Mrs. Thomas Schmidt
& Family*

Charles & Kathryn Howard
Mr. & Mrs. John Howard

Velmar Howard
Mrs. Sylvia Howard

Melvin & Mildred Hughes
Mrs. Ramona Strawser

Robert Hunt
Mr. & Mrs. Mike Stultz

Roy & Louise Hunter
Mr. & Mrs. Roger Coffing

Esther Hurley
Mrs. Georgeanna Ford
Mr. & Mrs. Vince Grogg

Carroll & Margaret Hushaw
Mr. & Mrs. Ralph Tillotson, II

Brad Johnson
Bryant Chevrolet-Buick

Martha Ann Johnson
Mr. and Mrs. Robert Summers

Dorothy Woodworth Swank Johnston
The Beavers

Elza Jones
Mrs. Darene Jones
Ms. Rita Jones

Nathan Jordan
Mr. & Mrs. Daniel Jordan

Robert Jumps
Mrs. Irene Norman

Cyril & Georgia Keller
Mr. & Mrs. Montie Keller

Evelyn Krout
Mr. & Mrs. John Cotten, Jr.

Jerome & Thelma Lape
Mr. & Mrs. Jake Lape

Jack Lightle
Mr. & Mrs. Robert Kirkpatrick

Jack & Judith Lightle
Mr. & Mrs. Herb Larson
*Community Action Program
of Western Indiana*

Toby Lighty
Mrs. Linda Zeller

Bill Livengood
Mr. & Mrs. Rodger Foster

Susan Mailouy
Mr. & Mrs. Bill Deck

Gene & Nona Martin
Mr. Ronald Hicks

Hilda Mattern
Rev. & Mrs. Harvey Lange

John Meadows
Mr. & Mrs. Darrell Applegate

"Cotton" Miller
Mrs. Irene Norman

MEMORIALS/TRIBUTES (CONTINUED)

Gene Millikan

*Mr. Raymond Horn
Ms. Peggy Ann Horn*

Lois Mycroft

*Mrs. Sue Allison
Mr. & Mrs. Frank Barber
Mr. & Mrs. Dale Cates
Mr. & Mrs. James Clawson
Ms. Sue Crawford
Mrs. Georgeanna Ford
Mr. & Mrs. Vince Grogg
Mr. & Mrs. Ed Grubb
Ms. Michelle Lacy
Ms. Margo Lewis
Mr. & Mrs. Dick Minnette
Mr. Scott Mycroft
Mr. Steve Ransom
Mr. & Mrs. Charles Swingle*

George Norman

Mrs. Irene Norman

Jeff Orr

Mr. & Mrs. Jeff Mason

Rex Orr

*Mr. & Mrs. Rick Ashton
Mr. & Mrs. Milo Bever
Mr. & Mrs. David Bodine
Mr. & Mrs. Chad Bolser
Mr. & Mrs. Greg Campbell
Mrs. Cheryl Carlson
Mr. & Mrs. James Clawson
Mr. & Mrs. Dale Clawson
Mr. & Mrs. John Cotten, Jr.
Mr. & Mrs. Byod Crone
Mr. & Mrs. Dean Curtis
Ms. Mae Debord
Mr. & Mrs. Bob Denhart
Mr. & Mrs. Carl Dinsmore
Mr. & Mrs. Kenny Drollinger
Mr. & Mrs. Jerry Ferrell
Mr. Larry Fisher & Ms. Karen Orr
Mrs. Georgeanna Ford
Mr. & Mrs. Warner Freese
Mr. & Mrs. Bruce Gee
Ms. Cynthia Gee
Mr. & Mrs. Vince Grogg
Ms. Debby Gurley
Mr. & Mrs. Robert M. Hall
Mr. & Mrs. Jim Hegg
Mr. & Mrs. Jeff Hegg
Mr. & Mrs. Marlon Heideman
Mr. & Mrs. Joe Henderson
Mr. & Mrs. Brian Hoagland
Mr. & Mrs. Alan Holt*

*Mr. James Howard
Mrs. Kay Hunter
Mr. John Ives
Mr. & Mrs. Larry Jacobs
Mr. & Mrs. John Johnson
Mr. & Mrs. Steve Jolley
Mr. & Mrs. Sonny Keller
Mr. & Mrs. Ron Ledbetter
Mr. & Mrs. Dave Mason
Mr. & Mrs. Jeff Mason
Mr. & Mrs. Kevin Mericle
Mr. & Mrs. John Miller
Mrs. Marjorie Miller
Mr. & Mrs. Jerry Myers
Mr. & Mrs. Paul Offutt
Mr. & Mrs. Rick Ogborn
Mr. & Mrs. Emmett Orr
Mr. & Mrs. George Pastrick
Mr. & Mrs. Ron Pierson
Ms. Joella Ripsberger
Mr. & Mrs. Dave Sobottka
Mr. & Mrs. Otis Stander
Mr. & Mrs. Mark Switzer
Mr. & Mrs. Thad Taylor
Ms. Allison Thacker
Mr. & Mrs. Jerry Walker
Mr. & Mrs. Dale White
Mr. & Mrs. Floyd White
Mr. & Mrs. Mike Woodard
Mr. & Mrs. David Woodrow
Mr. & Mrs. John A. Wright
Mrs. Ellen Wright
Montezuma Elementary School
Professor Joanne Orr's Disability
Clinic Students – Adam, Alison, Andy,
Brandie, Lorena, & Sarah
Stuart & Branigin, LLP
Zormeier Cosmetic Surgery &
Longevity Center*

The Osborn & Burnison Families

Mr. & Mrs. Lowell Osborn

Arista Jean Perry

*Mr. & Mrs. Leonard Allen
Mr. & Mrs. Conrad Perry, Sr.
Mr. & Mrs. Conrad Perry, Jr.
Dr. Tammy Perry
Freedom Christian Church*

Kathy Perry

*Mr. & Mrs. Rob Bowers
Mr. & Mrs. Wayne Crowder
Mr. & Mrs. Kevin Goepfner
Ms. Renee Howell
Ms. Shelly Perry
Mr. & Mrs. Miles Stucky*

*Mr. & Mrs. Ralph Tillotson
Mr. & Mrs. Vanroekel
Mr. & Mrs. Chris Webb
Perry Equipment*

Martha Potter

Mr. & Mrs. Don Moss

Hank Purgason

*Mr. & Mrs. Jeffrey Auter
Mr. & Mrs. David Bardos
Mr. & Mrs. Milo Bever
Mr. & Mrs. Pete Bodine
Mr. & Mrs. Robert Brewer
Mr. & Mrs. Russell Crowder
Mr. & Mrs. Chris Fetsch
Mr. & Mrs. Russell Hutchison
The Sam & Charlotte Miller Family
Ms. Muff Rennick
Mr. Robert Taylor
Clifton Second Baptist Church*

Jerri Purgason

*Mr. Michael Bardos &
Ms. Anna Binder
Mr. & Mrs. Russell Crowder*

Beverly Rennison

Mrs. Nancy Donovan

Philip Rhode

Mr. & Mrs. Ben Bowles

Grover & Pearl Rice

Mr. Wayne Rice

Nadine Sample

Mr. Cliston Sample

Cindy Sauer

Mr. Harold Long

John Schneider

Mr. & Mrs. Ben Bowles

Brett Shirley

*Mr. & Mrs. Howard Crawford
Mr. & Mrs. Robert Shepherd*

William "Bill" Sanders, Sr.

Mrs. Irene Norman

Carol Smail

Mr. William Smail

MEMORIALS/TRIBUTES (CONTINUED)

Virginia Smail

*Mr. & Mrs. Ron Applegate
Mr. & Mrs. Tim Bell
Mr. George Bell
Mr. Richard Brewer
Mr. Robert Brewer
Mr. Brian Brewer
Mr. & Mrs. John Cotten, Jr.
Mr. & Mrs. Joe Davan
Mr. & Mrs. Phil Dean
Mr. & Mrs. Roger Dean
Mrs. Ruth Dean
Mrs. Georgeanna Ford
Mr. & Mrs. Bruce Gee
Mr. & Mrs. Clay Gerling
Mr. & Mrs. Vince Grogg
Mr. & Mrs. Ed Grubb
Ms. Debby Gurley
Mr. & Mrs. Larry Jacobs
Mr. & Mrs. Jerry James
Mr. & Mrs. Richard Klage
Mr. & Mrs. Jack Macy
Mr. & Mrs. Casey McClure
Mr. & Mrs. Tom McGurk, Jr.
Mr. & Mrs. Larry McKee
Mr. & Mrs. Kevin Mericle,
 Ryan & Taylor
Mr. Mark Milach
Mr. & Mrs. Jack Murray
Mr. & Mrs. John T. Myers
Mr. & Mrs. Robert Shelby,
 Rob & Doug Shelby
Mr. Jack Spinning
Ms. Susie Strawser
Ms. Jo Anne Vyse
Mr. & Mrs. Floyd White
Mr. & Mrs. Dale White
Mrs. Mary Kay Young
3-D Rentals*

Pat Smith

*Mr. & Mrs. Bob Denhart
Mrs. Betty Smith*

Jamie Stockdale

*Mr. & Mrs. Nick Linville
Mr. & Mrs. Wes Stockdale*

Janice Kay Stonecipher

*Mr. & Mrs. Frank Barber
Mr. & Mrs. John Cotten, Jr.
Mr. & Mrs. Bruce Pierce
Mr. & Mrs. Charles Swingle*

Earl & Maxine Strawser

Mr. & Mrs. Robert Strawser

Mr. & Mrs. Jesse Strawser & Esther

Mrs. Ramona Strawser

Raymond "Beanie" Strawser

Mrs. Ramona Strawser

Jerry Summers

Mr. & Mrs. Robert Summers

Keith Summers

Mr. & Mrs. Bob Denhart

Max Summers

Mr. & Mrs. Robert Summers

Wilma Sutherlin-Hadley

Mrs. Sarah Lou Fishero

Charles Taylor

Mr. & Mrs. Ben Bowles

Ivan Thomas

Ms. Annalea Thomas Hosler

Jerry Townsend

Mrs. Linda Townsend

Ronald Tuggle

Ms. Cheryl Tuggle

Darrell "Duke" Vyse

*Mrs. Georgeanna Ford
Mr. & Mrs. Fred Rayburn
Mr. & Mrs. Charles Swingle*

Jim & Martha Wallace

Mr. & Mrs. Scott Wallace

Richard Wells

Mr. & Mrs. Jeff Troike

Tim Whitaker

Mr. & Mrs. Marlon Heideman

Richard Williams

Mr. & Mrs. Rodger Foster

Richard Leon Williams

*Ms. Jennifer Dinsmore
Mrs. Barbara McConnell*

John Wichus

Mr. & Mrs. Jeff Mason

George & Anna Wilson

Mr. & Mrs. John Cotten, Jr.

Joshua Witsman

*Mr. & Mrs. Tom Witsman
Covington Gold Rush*

Trudie Witt

*Ms. Theresa Grisham
Mr. & Mrs. Robert Maus*

Bonnie Wolf

*Mr. Harold Long
Mr. & Mrs. Ralph Tillotson, II
Mr. R.J. Wolf*

Floyd & Mildred Woodrow

*Mr. Larry Woodrow &
Ms. Toni Jo Lindstrom*

Russell Woodrow

*Mr. & Mrs. Dale Cates
Mr. & Mrs. James Clawson
Mr. & Mrs. Wayne Crowder
Mr. & Mrs. Vince Grogg
Mr. & Mrs. Paul Kirkpatrick
Mr. & Mrs. Allen Lueking*

Doris Woods

*Mr. & Mrs. Thomas Schmidt
& Family*

Coy Scott Zeller

Mrs. Linda Zeller

Roscoe Zeller

Mrs. Linda Zeller

*Honoring a loved
one through
charitable gifts is
often an especially
meaningful act of
paying tribute to
someone special
while assuring that
worthwhile values
continue to
influence the world
around us.*

MEMORIALS/TRIBUTES (CONTINUED)

TRIBUTES

Ed & Jan Bodine

Mrs. Georgeanna Ford

Robert & Margaret Buser

Mr. & Mrs. Vince Grogg

Robert Buser

Mr. & Mrs. John Fulton

The Children of George & Ethel Cooper

Mr. Harold Long

John Cottrell

Mrs. Carolyn Helms

Susie Curtis

Mr. & Mrs. Robert Shepherd

Lynn DeSutter

Mr. & Mrs. Pat McGraw

Roger Duncan

Mrs. Helen Alenduff

Jeff Fishero

Maggie Fishero

Miriam Fogel

Mrs. Carolyn Helms

Rusty & Ann Harrison

*Mrs. Carolyn Helms
Mr. & Mrs. Robert Shepherd*

Carolyn Helms

Mr. & Mrs. Robert Shepherd

Stuart & Evelyn Henrickson

Mr. & Mrs. John L. Brown

Max & Helen Hoffman

Mr. & Mrs. John Fulton

Larry & Sally Kammin

Mr. Rick Kellam & Ms. Carol Myers

Dennis Kovar

Mr. & Mrs. Robert Shepherd

Hunter McGraw

Mr. & Mrs. Pat McGraw

Raymond & Eva McGraw

Mr. & Mrs. Pat McGraw

Marceline McGurk

Ms. Shannon McGurk

Tom McGurk, Jr.

Ms. Shannon McGurk

Honorable John T. Myers

Mr. Rick Kellam & Ms. Carol Myers

Matt Perry

Mr. & Mrs. Randy Hathaway

Matt & Linda Runyon

Mr. & Mrs. Robert Shepherd

Bob & Melinda Shepherd

*Mrs. Carolyn Helms
Mr. & Mrs. Matt Runyon*

Esteleen Spragg

Lillie Fishero

Bev Wichus

Mr. & Mrs. Jeff Mason

The Western Indiana Community Foundation and its affiliates truly appreciate every gift received from our generous donors. If we have neglected to mention your contribution for the time period listed, please accept our sincere apologies for the oversight. Thank you again for your support.

Meet Your Board & Staff

The Western Indiana Community Foundation (Attica, Covington and Southeast Fountain Community Foundations) focuses its attention on local needs within the geographical boundaries as set by the Board of Directors (i.e., the school corporation boundaries). Below is a listing of the current Board of Directors representing each Foundation area.

Attica CF

Mary Schott, President
Dan DeSutter, Vice President
Marsha Brown, Sec./Treas.
Dr. Roger Duncan
Bob Shepherd
Ann Harrison
Harold VanDame
Dolly Zollars
Carmien Berghoff
Cindy Mason

Covington CF

Kevin Martin, President
Dick Minnette, Vice President
Raquel Stultz, Treasurer
Beth Mason
John Shambach
Bob Wright
Tom McGurk, Jr.
Susan Reynolds

Southeast Fountain CF

Rodger Foster, President
Ingrid Craft, Vice President
Irene Norman, Secretary
Mark Haas
Marsha Orr
Dr. Mike Meade
Pearce McKinney
Ann Hathaway

DONORS & CONTRIBUTORS

In partnership with our donors (individuals, businesses, corporations, churches, service organizations, and civic clubs), the Community Foundation awards several hundred thousand dollars in grants each year to a broad range of charitable organizations in our community. This support is provided through a variety of endowment and pass-through funds including: arts, culture, historic preservation, faith, parks and recreation, land protection, education and scholarships, health and human service, children and youth, seniors, and more. We received support from the following donors and contributors from October 1, 2013 to April 30, 2014.

Mrs. Charline Allen
Mr. & Mrs. David Allen
Mr. & Mrs. Millard Allen
Mr. & Mrs. Norman E. Allen
Mr. & Mrs. Todd Baldwin
Mr. & Mrs. Robert Baradziej
Mr. & Mrs. Ralph Bell
Mr. & Mrs. Chad Berger
Mr. & Mrs. Milo Bever
Mr. & Mrs. Hank Bilslund
Mr. & Mrs. Freddie Boller
Mr. & Mrs. Bill J. Brewer
Mr. Rick Brewer & Ms. Dee Minerva
Mr. & Mrs. John L. Brown
Ms. Nancy L. Burchett
Mr. & Mrs. Robert L. Buser
Mr. & Mrs. Lloyd Chambers
Mr. & Mrs. David Clark
Mr. & Mrs. Norman Clem
Mrs. Fern D. Cline
Mr. David W. Clingan
Mr. & Mrs. Shaun Cooper
Mrs. Jean Cunningham
Ms. Carolyn Davis
Ms. Nancy Dean
Mr. & Mrs. Tony DeMoss
Mr. & Mrs. Kurt Dinsmore
Mr. & Mrs. Dean Dunham
Mr. & Mrs. Robert R. Fairchild
Mr. & Mrs. Warner Freese
Mr. & Mrs. Tom Frey
Mrs. Florence Fultz
Mr. & Mrs. Paul C. Gignilliat
Mr. & Mrs. Kevin Goepfner
Mr. Greg Green
Mr. & Mrs. Vincent F. Grogg
Ms. Christine Gross
Mr. & Mrs. Robert Gross
Mr. & Mrs. Ed C. Grubb
Mr. & Mrs. William Grubb
Mr. Erich Hannah
Mr. & Mrs. Robert Hardy
Mr. & Mrs. Wade C. Harrison II
Mrs. Nancy Holladay
Mr. & Mrs. Joe Henderson
Mr. & Mrs. Jeff Henry
Dr. & Mrs. Max Hoffman
Mr. & Mrs. Terry L. Holland
Mrs. Rosemary Hunt
Mr. & Mrs. John Inman
Mrs. Julia Isom
Mr. David H. Jacobs
Mr. & Mrs. Jerry D. James
Mr. & Mrs. Ernie Johannes
Mr. & Mrs. Kevin Jones
Mr. John Karrfalt
Mrs. Dolores Keller
Mr. & Mrs. Paul Kirkpatrick
Mr. & Mrs. Richard L. Klage

Mr. Dennis Kovar
Mr. & Mrs. Gary Langley
Mr. & Mrs. Duane Lathrop
Mr. & Mrs. Nick Linnville
Mr. & Mrs. James Link
Ms. Stephanie Lober
Mr. & Mrs. Donald Martin
Mr. & Mrs. Jeff Mason
Ms. Molly Mason
Mr. & Mrs. Vic McFadden
Mr. & Mrs. Drew McGurk
Mr. & Mrs. Kyle McGurk
Mrs. Marceline McGurk
Mr. & Mrs. Thomas McGurk Jr.
Mr. Mark Milach
Mr. & Mrs. Dick Minnette
Dr. and Mrs. Masakazu Miyagi
Ms. Heather Miyagi
Mr. Lee Roy Mornout
Mr. & Mrs. Ed Myers
Mr. & Mrs. John T. Myers
Mr. & Mrs. Rob Nettles
Mr. & Mrs. Leonard Orr
Mr. & Mrs. Lowell Osborn
Mrs. Peggy Parke
Mr. & Mrs. Richard Partezana
Mrs. Jane Phillips
Mr. & Mrs. Chuck Pippin
Mr. & Mrs. Dan Poll
Mr. & Mrs. Harlan Purple
Mr. & Mrs. Fred Rayburn
Mr. & Mrs. Henry Schmitt
Mr. & Mrs. John L. Shambach
Dr. Sean Sharma
Mr. & Mrs. Brian Shepherd
Mr. & Mrs. Jerry W. Shuman
Mr. & Mrs. Andrew Simpkins
Mr. & Mrs. Bill Stonecipher
Ms. Suzanne Strawser
Mr. & Mrs. Darin Streuer
Mr. & Mrs. Mike Stultz
Ms. Beth Stump
Mr. & Mrs. Joe Summers
Mr. & Mrs. Charles Swingle
Mr. & Mrs. Mark Switzer
Dr. Robert Talbert
Mr. & Mrs. Thad Taylor
Ms. Jo Anne Vyse
Mr. & Mrs. Scott Wallace
Mr. & Mrs. Gary Wheeler
Mr. & Mrs. Dale White
Anonymous
Allen Auction & Real Estate
American Legion Post #350
Archer Daniels Midland Company
Attica Consolidated Schools
Back to the Street Ministries
Beck Seeds – Brien & Mary Duncan
Beef House Restaurant

Bill Sanders for Sheriff
Central National Bank & Trust Co.
CentreBank
Chateau Thomas Winery
Christian Women's Fellowship
Church of Living Water
Cline Grain
Coffeenians
Country Side Veterinary Clinic
Covington Citizens Scholarship Fund
Covington United Methodist Church
Covington Woman's Club
Dickerson Funeral Home
Faulstich Printing
Friendship Garden Club
First Baptist Church – Covington
First Church of Christ - Covington
Fountain County Art Council, Inc.
Fountain County Republican Central Committee
Fountain County Prosecutor's Office
Fountain Foundry
Fountain Trust Company
Gessie United Methodist Church
Goings Kitchen Korner
The Grainger Foundation
Grainger Corporation
Green Minds
Gutter Barn - Joe Davan
Hathaway Farms
Industrial Federal Credit Union
Kirtley, Taylor, Sims, Chadd, & Minnette Law Office
Knapper Corporation
Local Liquors
MP3 Farms
MainSource Bank
Martin Farms
Old National Bank
Overpeck Gas
Rileysburg Church
Shelby Funeral Home
State Farm Insurance
Pearce & Alice McKinney
Steel Grip, Inc.
Stringtown Church of God
Tanner Insurance
Tri Kappa Associates—Attica
Tri Kappa Associates – Covington
Town of Wallace
United Way of Central Indiana
Uptown Salon
Volunteer Twenty, Inc.
Walnut Knoll – Pearce & Alice McKinney
Walter Hoyt American Legion Aux 350
Warrick Motor Company
West Central Veterinary Clinic
Woodley Farra Manion Portfolio Management

HOW TO INCLUDE ANYONE IN YOUR WILL
(INCLUDING YOUR COMMUNITY FOUNDATION)

How you include a charity in your will depends on what sort of gift you would like to make, and how you want to provide for your other beneficiaries. Take a look at the examples below.

Make a specific bequest

This bequest is an exact description of a dollar amount or specific asset from your estate to go to a beneficiary. It is very important that specific bequests be exact – vagueness can lead to confusion. Keep in mind that specific bequests are usually the first to be paid out.

When Carolyn made her will, she left her collection of fine art to her niece and \$25,000 to the Community Foundation.

Make a percentage bequest

This bequest designates a fraction of the available estate to a beneficiary. Many prefer this kind of bequest because the relative size of the bequest is tied to the value of the estate, and that treats all heirs equally.

When Brent made his will, he left 25% of his estate to each of his twin sons, 25% to his daughter, and 12.5% each to his church and the Community Foundation.

Make a residual bequest

This bequest assigns all the property that remains after the payment of administration costs, taxes and expenses, and every other bequest has been satisfied. A simple way to describe the residue of an estate is that which is “left over.” After you have made provisions for individuals with exact amounts, you can give whatever is left of your estate to a worthy charity such as the Community Foundation. This option assures that your heirs are taken care of first.

When Myrna made her will, she left \$250,000 to each of her four children, \$50,000 to a good friend Helen, and whatever was left of her estate to the Community Foundation.

Make a contingent bequest

This bequest puts in place a “back-up” beneficiary - an individual or organization who will receive the gift only under certain circumstances. This option assures that unintended persons do not receive a gift originally meant for someone else.

When Derek made his will, he left his entire estate to his wife, Pauline. In the event she does not survive his death, his estate will be divided between the Community Foundation and two other worthwhile charities.



**Western Indiana
 Community Foundation, Inc.**

Please send this form and your contribution to:
Western Indiana Community Foundation
P.O. Box 175
Covington, IN 47932

Name:

Address:

Enclosed is my contribution of:

- \$2,500
- \$1,000
- \$500
- \$250
- \$100
- \$50
- \$25
- \$_____ (other amount)
- \$1,000 to establish a new named fund
- Please contact me about making a gift of stock

My contribution is to support projects for:

- Attica Community Foundation
- Covington Community Foundation
- Southeast Fountain Community Foundation

Name of Fund or Field of Interest:

Gifts will be placed in an unrestricted fund unless otherwise noted.

My contribution is:

- in honor of (or)
- in memory of

(name)

Please Notify:

Name:

Address:

- I would like to receive more information about establishing a fund in my family’s name.

Dates to Remember!

August 8, 2014 – Deadline for verification of school information for fall semester scholarship payments.

August 23, 2014 – Bradley W. Johnson Scholarship Poker Run

September 6, 2014 - “Never Forgotten Tailgate” - Benefit for the Layton W. Hathaway, Arista Jean Perry and Jamie Lynn Stockdale Scholarships.

November 15, 2014 – National Philanthropy Day

December 2, 2014 – Giving Tuesday

December 31, 2014 – Deadline to complete the online College Cost Estimator form. This form is a requirement for applying for any Foundation scholarship that includes financial need as part of the selection criteria.

If you are sponsoring/hosting an event that benefits one of the 140+ endowment funds managed by the Foundation, please contact us. We would LOVE to help promote the event. Send your event information to: info@wicf-inc.org.

Western Indiana Community Foundation

Serving the communities of Attica, Covington, Kingman, Wallace, Hillsboro, Newtown, Mellott, Veedersburg, and those in between.

Attica Community Foundation

P.O. Box 161

Attica, IN 47918

(765) 793-0702 Fax: (765) 793-0703

Email: acf@wicf-inc.org

Covington Community Foundation

P.O. Box 175

Covington, IN 47932

(765) 793-0702 Fax: (765) 793-0703

Email: ccf@wicf-inc.org

Southeast Fountain Community Foundation

P.O. Box 95

Veedersburg, IN 47987

(765) 793-0702 Fax: (765) 793-0703

Email: sfcf@wicf-inc.org



WESTERN INDIANA COMMUNITY FOUNDATION
PO BOX 175
COVINGTON, IN 47932

CHANGE SERVICE REQUESTED

NON-PROFIT
ORGANIZATION
US POSTAGE PAID
COVINGTON, IN
PERMIT NO. 175